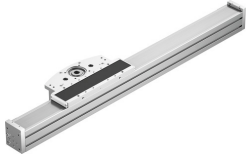


Cantilever linear actuator ELCC-TB-KF-90-1700-0H-P0-CR

Part number: 8082407

FESTO



Data sheet

Feature	Value
Drive pinion effective diameter	50.93 mm
Working stroke	1700 mm
Size	90
Stroke reserve	0 mm
Toothed belt pitch	5 mm
Type code	ELCC
Mounting position	Any
Guide	Recirculating ball bearing guide
Structural design	Electromechanical cantilever axis
Symbol	00991210
Max. acceleration	30 m/s ²
Max. speed	5 m/s
Repetition accuracy	±0.05 mm
Corrosion resistance class (CRC)	0 - No corrosion stress
Degree of protection	IP20
Ambient temperature	-10 °C ... 60 °C
2nd moment of area I _y	2667900 mm ⁴
2nd moment of area I _z	2049490 mm ⁴
Max. driving torque	33 Nm
Max. force F _y	13957 N
Max. force F _z	13523 N
Max. torque M _x	167 Nm
Max. torque M _y	1300 Nm
Max. torque M _z	1233 Nm
Max. feed force F _x	1200 N
Mass moment of inertia J _H per meter of stroke	62.9 kgcm ²
Mass moment of inertia J _L per kg of payload	6.5 kgcm ²
Mass moment of inertia J _O	55.2 kgcm ²
Feed constant	160 mm/U
Reference value, running performance	5000 km
Lubrication interval, distance dependent	1000 km
Moving mass at 0 mm stroke	5487 g
Additional weight per 10 mm stroke	97 g
Basic weight with 0 mm stroke	14787 g
Additional moving mass per 10 mm stroke	97 g
Material of end caps	Wrought aluminum alloy, anodized

Feature	Value
Profile material	Wrought aluminum alloy, anodized
Note on materials	Contains paint-wetting impairment substances RoHS-compliant
Drive head material	Wrought aluminum alloy, anodized
Guide rail material	Rolled steel, Corrotect coated
Housing material	High-alloy stainless steel
Slide material	Cast aluminum, anodized
Toothed belt clamping component material	Wrought aluminum alloy, anodized
Toothed belt material	Polychloroprene with glass cord and nylon coating